

Product Information

LABO-CF-S

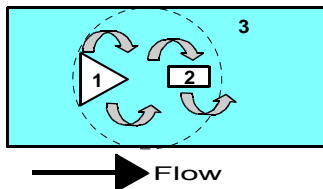
**Flow Switch
 LABO-CF-S**



- Flow measurement device using the vortex measurement principle
- High precision
- High overload protection
- No moving parts
- Rapid installation and removal thanks to clamp fastening
- Various connections using building block system

Characteristics

A narrow triangular body (1), which goes through the complete cross-section of the measurement pipe, creates vortices in the medium when there is a flow (Kármán vortex street, vortex effect). The frequency of the vortex is proportional to the flow, and is detected using a piezo-sensor (2), which lies behind the triangular body. The complete unit, vortex body, and detector are designed as a plug-in unit (3), and are inserted into the pipe. Here, a lightning fast separation between measurement pipe and the complete measurement unit is possible.



The integrated converter / counter make available an electronic switching output (push-pull) with adjustable characteristics (minimum/maximum) and hysteresis, which responds when an adjustable limit is fallen short of or exceeded. The switching value can be set to the currently existing flow using "teaching". Models with analog or pulse output are also available.

Technical data

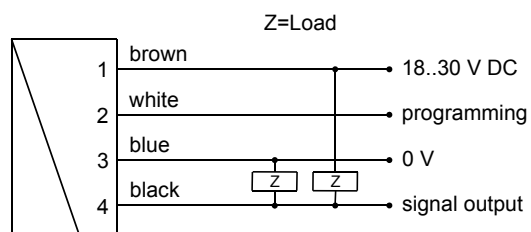
| | |
|-----------------------------|---|
| Sensor | vortex principle |
| Nominal width | DN 8..25 |
| Process connection | female thread G 1/4..G 1 (others available on request) |
| Switching ranges | 0.9..150 l/min for details, see table "Ranges" |
| Measurement accuracy | up to 50 % of full scale value: ±1 % of measured value from 50 % of full scale value: ±2 % of measured value |
| Pressure resistance | PN 10 bar |

| | | |
|---------------------------------|--|---------------------------------|
| Medium temperature | 0..60 °C | |
| Ambient temperature | -20..+70 °C | |
| Materials medium-contact | Housing | CW614N plated, 1.4571 or POM GF |
| | Connection | CW614N plated, 1.4571 or POM |
| | Detector | ETFE PA6T6I 40 % GF |
| | Seal | EPDM |
| Supply voltage | 10..30 V DC | |
| Power consumption | < 1 W (without load) | |
| Switching output | transistor output "push-pull" (resistant to short circuits and polarity reversal) I _{out} = 100 mA max. | |
| Display | yellow LED (On = Normal / Off = Alarm / rapid flashing = Programming) | |
| Electrical connection | for round plug connector M12x1, 4-pole | |
| Ingress protection | IP 67 (IP 68 when oil-filled) | |
| Weight | see table "Dimensions" | |
| Conformity | CE | |

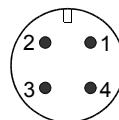
Ranges

| G | Types | Range l/min H ₂ O |
|-------|-------------|---------------------------------|
| G 1/4 | LABO-CF-008 | 0.9.. 15 l/min |
| G 3/8 | LABO-CF-010 | 1.8.. 32 l/min |
| G 1/2 | LABO-CF-015 | 3.5.. 50 l/min |
| G 3/4 | LABO-CF-020 | 5.0.. 85 l/min |
| G 1 | LABO-CF-025 | 9.0..150 l/min |

Wiring

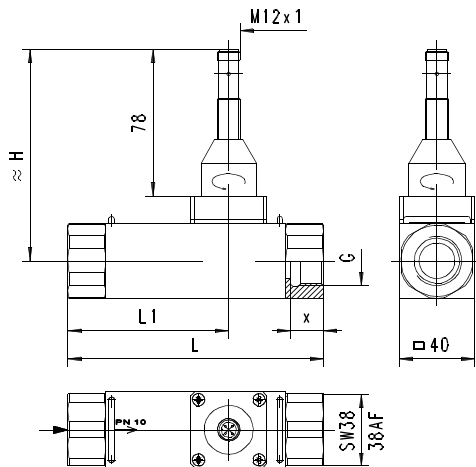


Connection example: PNP NPN



Before the electrical installation, it must be ensured that the supply voltage corresponds with the data sheet. It is recommended to use shielded wiring.

Dimensions



| G | DN | Types | H | L | L1 | X | Weight* kg |
|-------|-------|-------------|-----|-----|----|------|---------------|
| G 1/4 | DN 8 | LABO-CF-008 | 111 | 125 | 69 | 12.5 | 1.62 |
| G 3/8 | DN 10 | LABO-CF-010 | 109 | 100 | 50 | | 1.27 |
| G 1/2 | DN 15 | LABO-CF-015 | 111 | | | 14.5 | 1.27 |
| G 3/4 | DN 20 | LABO-CF-020 | 113 | 135 | 85 | 16.5 | 1.67 |
| G 1 | DN 25 | LABO-CF-025 | 115 | 155 | 95 | 18.5 | 1.47 |

*Weight details for metal model. Plastic models available on request

Handling and operation

Installation

The vortex flow meter requires a run-in length of 5..10 x D in order to achieve its specified accuracy. If deposits are to be expected, sensor and electronics should not be installed underneath. It should be ensured that the sensor is installed in the direction of the flow arrow. If the sensor is to be cleaned, the clamps should be released, and the device removed (the pipe should be pressure-free for this). It should be ensured during cleaning that the oscillating vortex body is not exposed to impact (in the moulded part there is a sensitive piezo-ceramic sensor, which can break).

Operation and programming

The switching value is set as follows:

- Apply the flow rate to be set to the device.
- Apply an impulse of at least 0.5 seconds and max. 2 seconds duration to pin 2 (e.g. via a bridge to the supply voltage or a pulse from the PLC), in order to accept the measured value.
- When the teaching is complete, pin 2 should be connected to 0 V, so as to prevent unintended programming.

The device has a yellow LED which flashes during the programming pulse. During operation, the LED serves as a status display for the switching output.

To avoid the need to transit to an undesired operating status for the purpose of teaching, the device can be provided ex-works with a teach-offset. The teach-offset point is added to the currently measured value before saving. The offset point can be positive or negative.

Example: The switching value should be set to 80 l/min. However, it is possible only to reach 60 l/min without problems. In this case, the device would be ordered with a teach-offset of +20 l/min. At a flow rate of 60 l/min in the process, teaching would then store a value of 80 l/min.

Note

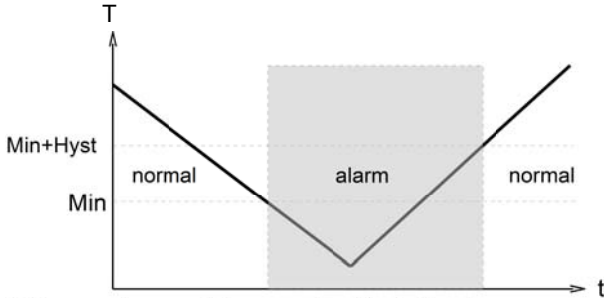
The switching value can be programmed by the user via "teaching". If desired, programmability can be blocked by the manufacturer. The ECI-1 device configurator with associated software is available as a convenient option for programming all parameters by PC, and for adjustment.

Product Information

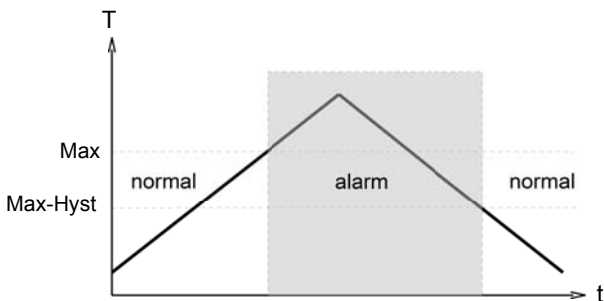
LABO-CF-S

The limit switch can be used to monitor minima or maxima.

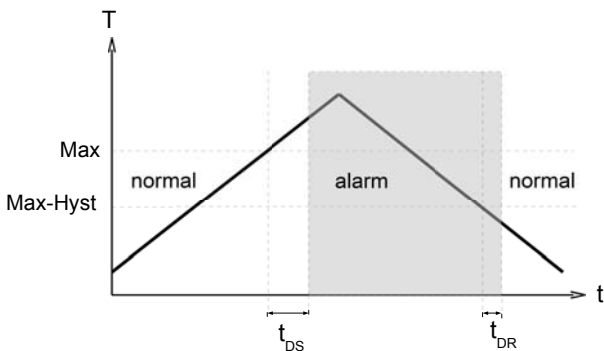
With a minimum-switch, falling below the limit value causes a switchover to the alarm state. Return to the normal state occurs when the limit value plus the set hysteresis is once more exceeded.



With a maximum-switch, exceeding the limit value causes a switchover to the alarm state. Return to the normal state occurs when the measured value once more falls below the limit value minus the set hysteresis.

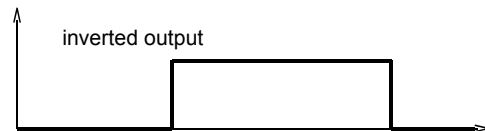
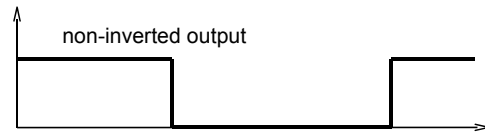


A switchover delay time (t_{DS}) can be applied to the switchover to the alarm state. Equally, one switch-back delay time (t_{DR}) of several can be applied to switching back to the normal state.



In the normal state the integrated LED is on, in the alarm state it is off, and this corresponds to its status when there is no supply voltage.

In the non-inverted (standard) model, while in the normal state the switching output is at the level of the supply voltage; in the alarm state it is at 0 V, so that a wire break would also display as an alarm state at the signal receiver. Optionally, an inverted switching output can also be provided, i.e. in the normal state the output is at 0 V, and in the alarm state it is at the level of the supply voltage.



A Power-On delay function (ordered as a separate option) makes it possible to maintain the switching output in the normal state for a defined period after application of the supply voltage.

Product Information

LABO-CF-S

Ordering code

The basic device is ordered e.g. CF-xxx
with electronics e.g. LABO-CF-xxx

CF-

| | | | | | | |
|----|----|----|----|----|----|----|
| 1. | 2. | 3. | 4. | 5. | 6. | 7. |
| | | | | | E | E |

LABO-CF-

| | | | | |
|----|----|-----|-----|-----|
| 8. | 9. | 10. | 11. | 12. |
| | S | | | |

○=Option

| | | | | | | | |
|---|--|--|--|--|--|--|---|
| 1. Nominal width | | | | | | | |
| 008 | DN 8 - G 1/4 | | | | | | |
| 010 | DN 10 - G 3/8 | | | | | | |
| 015 | DN 15 - G 1/2 | | | | | | |
| 020 | DN 20 - G 3/4 | | | | | | |
| 025 | DN 25 - G 1 | | | | | | |
| 2. Process connection | | | | | | | |
| G | female thread | | | | | | |
| 3. Connection material | | | | | | | |
| M | CW614N plated | | | | | | |
| K | ○ 1.4571 | | | | | | |
| P | ○ POM | | | | | | |
| 4. Body material | | | | | | | |
| M | CW614N plated | | | | | | |
| K | 1.4571 | | | | | | |
| P | ○ POM GF | | | | | | |
| 5. Switching range | | | | | | | |
| 015 | 0.9.. 15 l/min | | | | | | ● |
| 032 | 1.8.. 32 l/min | | | | | | ● |
| 050 | 3.5.. 50 l/min | | | | | | ● |
| 085 | 5.0.. 85 l/min | | | | | | ● |
| 150 | 9.0..150 l/min | | | | | | ● |
| 6. Seal material | | | | | | | |
| E | EPDM | | | | | | |
| 7. Connection for | | | | | | | |
| E | electronics | | | | | | |
| 8. For nominal width | | | | | | | |
| 008 | DN 8 - G 1/4 | | | | | | ● |
| 010 | DN 10 - G 3/8 | | | | | | ● |
| 015 | DN 15 - G 1/2 | | | | | | ● |
| 020 | DN 20 - G 3/4 | | | | | | ● |
| 025 | DN 25 - G 1 | | | | | | ● |
| 9. Switching output (Limit switch) | | | | | | | |
| S | push-pull (compatible with PNP and NPN) | | | | | | |
| 10. Programming | | | | | | | |
| P | full scale value can be programmed (teaching possible) | | | | | | |
| N | ○ full scale value cannot be programmed (no teaching) | | | | | | |
| 11. Switching function | | | | | | | |
| L | minimum switch | | | | | | |
| H | maximum switch | | | | | | |
| 12. Switching signal | | | | | | | |
| O | standard | | | | | | |
| I | inverted | | | | | | |
| 13. Electrical connection | | | | | | | |
| S | for round plug M12x1, 4-pole | | | | | | |

Options

Switching delay period (0.0..99.9 s) . s
(from Normal to Alarm)

Switch-back delay period (0.0..99.9 s) . s
(from Alarm to Normal)

Power-On delay period (0..99 s) s
(after connecting the supply, time during which the switching output is not actuated)

Switching output fixed at l/min

Switching hysteresis %
Standard = 2 % of the metering range

Teach-offset %
(in percent of the metering range)
Standard = 0 %

Further options available on request.

Accessories

- Cable/round plug connector (KB...) see additional information "Accessories"
- Device configurator ECI-1